

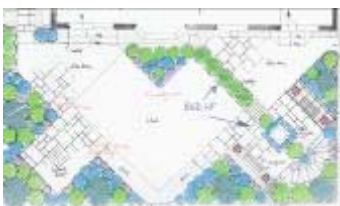
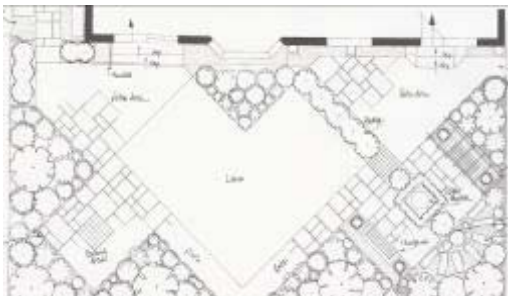
Dibden Purlieu, Hampshire, UK completed May 2006



My client wanted an easy to maintain space with a much reduced lawn area and several patio areas to take advantage of sunny and shady spots throughout the day. A keen interest in gardening also meant that the number of maintainable planting areas could be increased. I also re-sited a water feature within the new design.

As the garden was wide but not deep, the design challenge was to attempt to push back (or disguise) the boundary to make the garden appear deeper. I prepared two basic designs and the more geometric form was accepted. This design introduces much more visual interest within the garden and takes attention away from the imposing boundary fence.

A simple *trompe l'oeil* (a non-functioning gate) in the boundary fence opposite the patio doors gives the impression that the garden beyond also belongs to my clients. This feature helps to focus attention on to just one part of the boundary fence. Raised beds filled with fragrant, year round interest planting help to screen the boundary.



^
The Master Plan showing the angular design adopted

<
Colour coded Planting Plan for Brantwood – colours denote size of plant to show overall planting structure

