

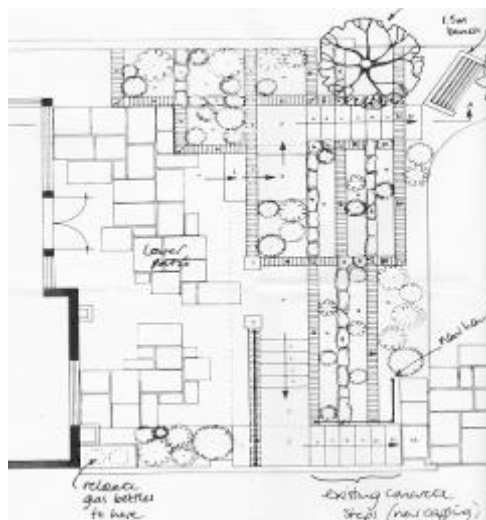
Damerham, Hampshire, UK completed Summer 2006

The back garden of this medieval timber-beamed property sloped quickly and steeply up to about 1.5m (5') and made the area outside the back of the house feel oppressive and unattractive.

My clients wanted to be able to dine and sit in this space but not to feel that the garden was 'on top of them'.

The design challenge was to make this slope appear to recede and also to be interesting in appearance from the back of the house.

The right hand set of steps could not be removed as they continued into the neighbour's garden and had a boundary wall built on them. For me, getting the journey up the slope right would be key to solving the problem here and it lay in altering these steps in some dramatic way.



I opted for a 90 degree return in the set of steps at step 5. This would help to create a deeper patio area in the sunniest part of the lower garden area and also immediately change the way you accessed the slope and the steps.

A second, informal set of steps in the left hand side of the slope provided a balance and the area in between was divided into a series of simple terraces. The choice of materials was altered slightly at the build stage to include oak sleepers (an earlier option) rather than dry stone walling to contrast with the brick retaining walls.

