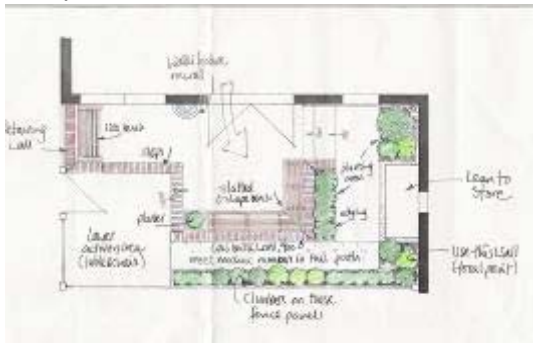


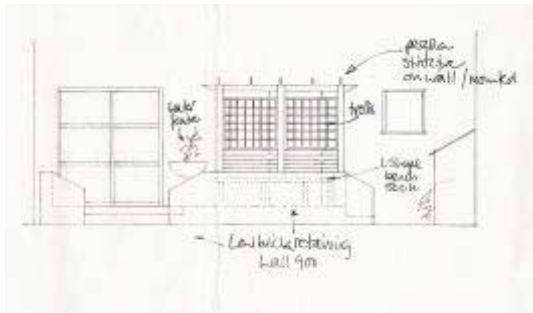
## Godbey House, Residential Home, Hayling Island

completed Summer 2006

Godbey House is home to between six and ten young boys and is run by Hampshire County Council. One of the staff members felt that a small garden space immediately adjacent to a therapy room could be developed further.



The garden space is along the northern side of the building and is shady and cool. Windows from the therapy space look out onto a wooden fence and non-descript concrete slab steps. The wish list included seating areas, privacy, water feature, storage and low maintenance.



I was tasked with creating a complementary space to support the work done with the young people in the room indoors. My first task was to understand the range of activities undertaken in the room and then to ask which of those activities could be done equally well (or better) outside.

I included the following elements to aid the therapeutic work being done indoors: a water feature mounted on the wall near the entrance; a purpose-built L-shaped seat immediately outside the doorway; alternative seating areas; a layout with no dead ends; simple planting to disguise the boundary fence and a "Speaking Wall" – slate panels fixed to the outside retaining wall for young people to write or draw on. The overall effect was of a surprisingly spacious and calm garden room.

