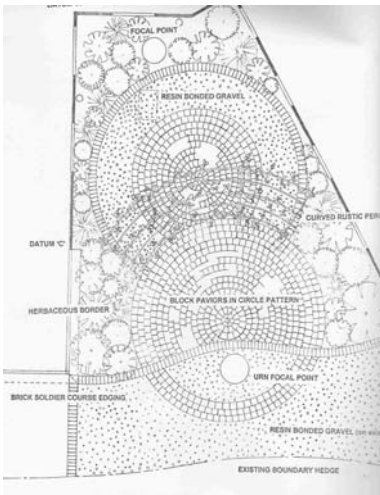


Havant War Memorial Hospital, Hampshire, UK

League of Friends, completed Spring 2004

The League of Friends of this 1930s cottage hospital, located in a built up area of Havant, felt there was a need to develop a small, grassed area between two busy wards for the benefit of the patients, staff and hospital visitors.

The design challenge was to maintain privacy for both the visitors to the garden and the patients in the wards. I also wanted to create a circulatory action (so that the visitor did not have to retrace their footsteps) in what is, effectively, a cul-de-sac. I also wanted to provide year-round interest from the windows overlooking the garden for patients to enjoy at any time of the year.



I chose a design based on two overlapping circles that fitted inside the cone shaped space. A curved rustic pergola bridged the gap and provided a large vertical presence in the space. It also gave some much needed shade to this south-facing garden.



Brick paviors were used to create circular paved areas and resin bonded gravel provided a non-slip surface. Planting was kept to the edges and beneath windows so that garden users felt they had some privacy.

Three curved seats located around the garden invite hospital visitors and patients to sit and enjoy the space. A curved path marked out clearly in beige resin bonded gravel provides an uninterrupted walk through the pergola and behind the seat placed at the back of the garden. The garden is an ideal place for occupational therapy and rehabilitation work with patients.

