

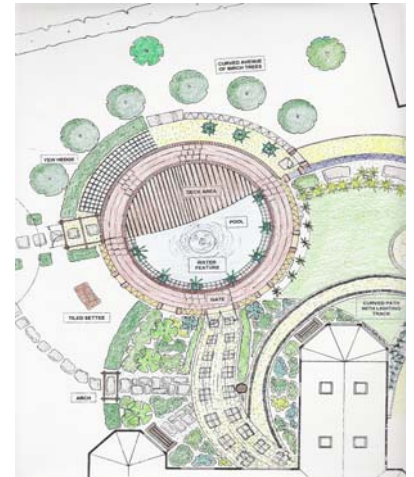
## Wavendon, Milton Keynes, UK

*completed April 2001*

The bungalow had recently been extended and a new conservatory added. The owners felt that this work had affected the existing garden design and asked me to come up with a radical design that incorporated the “wow!” factor.



The large garden had been landscaped several decades before. There was a semi circular retaining wall in the lower garden area that created a subtle terracing effect and a neat solution to the change in levels. A pergola and aviary building were the principal features in the space. I liked the effect created by the semi-circle in the garden and opted to build on it in the new plan.



The clients loved Ben Nicholson’s work and Modernist architectural traditions. They also wanted a contrast to the rather sedate appearance of the house. Both clients enjoy original art and have eclectic tastes in furnishings, decoration and art.



I opted for a semi-circular concrete rendered wall following the shape of the earlier wall feature that contained a new lower circle-shaped room. Half of this room was comprised of a pool and the other a ‘floating’ deck. Different shaped holes in the walls created framed views in both directions. Paths leading to this room were organic and sinuous in nature to echo the dominance of the new walls. A muralist added a mosaic tile effect later.

